



Location Map



Location Symbols

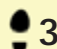
 Nearest Railway Station

 Walk Location

Essential Information

Distance:
6.5 miles/10.5 kms

Walk grade:

 Typical country walk along lanes and across fields, with some hills and stiles, paths can be muddy (depending on weather)

Maps:
OS Explorer 135
OS Landranger 199

Start/Finish:
Buxted Railway Station TQ 497233

Public Transport:
Trains: Buxted is on the Uckfield to London line and has a regular seven day service.

Parking:
Parking is available in Buxted



Hadlow Down Walk



Paths to Prosperity

East Sussex is a welcome haven for walkers in the busy south-east of England, with over two thirds of the County covered by the High Weald and Sussex Downs Areas of Outstanding Natural Beauty.

There is also a wealth of picturesque villages, country houses and parkland hidden within its rolling landscape, waiting to be discovered.

Please come and enjoy the unique splendours of our countryside, but please also support the local businesses that help make the countryside the vibrant place that it is today.

The Countryside Code

- Be Safe - plan ahead and follow any signs
- Leave gates and property as you find them
- Protect plants and animals, and take your litter home
- Keep dogs under close control
- Consider other people

Refreshments and Local Services

(see map for location)

- 1 The White Hart**
Public House and Restaurant -
01825 733192
- 2 Buxted Inn**
Public House - 01825 733510
- 3 Wilderness Wood**
Working Woodland and Visitor
Attraction - 01825 830509
- 4 Oast Farm**
Farm Shop and Tea Rooms - Lephams
Bridge, Buxted, 01825 733446
- 5 Sunnymead Farm Cottages**
Self Catering Accommodation -
Saunnymead Farm, High Hurstwood,
01825 733618

We hope that you enjoy the walk in this leaflet, which is one of a series produced by East Sussex County Council.

Copies of the leaflets for other walks in the series are available from Tourist Information Centres and libraries or direct from East Sussex County Council, by contacting the Rights of Way Team:-

By phone on:-
01273 482250 / 482354 / 482324

By post at:-
Transport and Environment Department
County Hall
St. Anne's Crescent
Lewes BN7 1UE

By e-mail at:-
rightsofway@eastsussex.gov.uk

By downloading from the website at:-
www.eastsussex.gov.uk

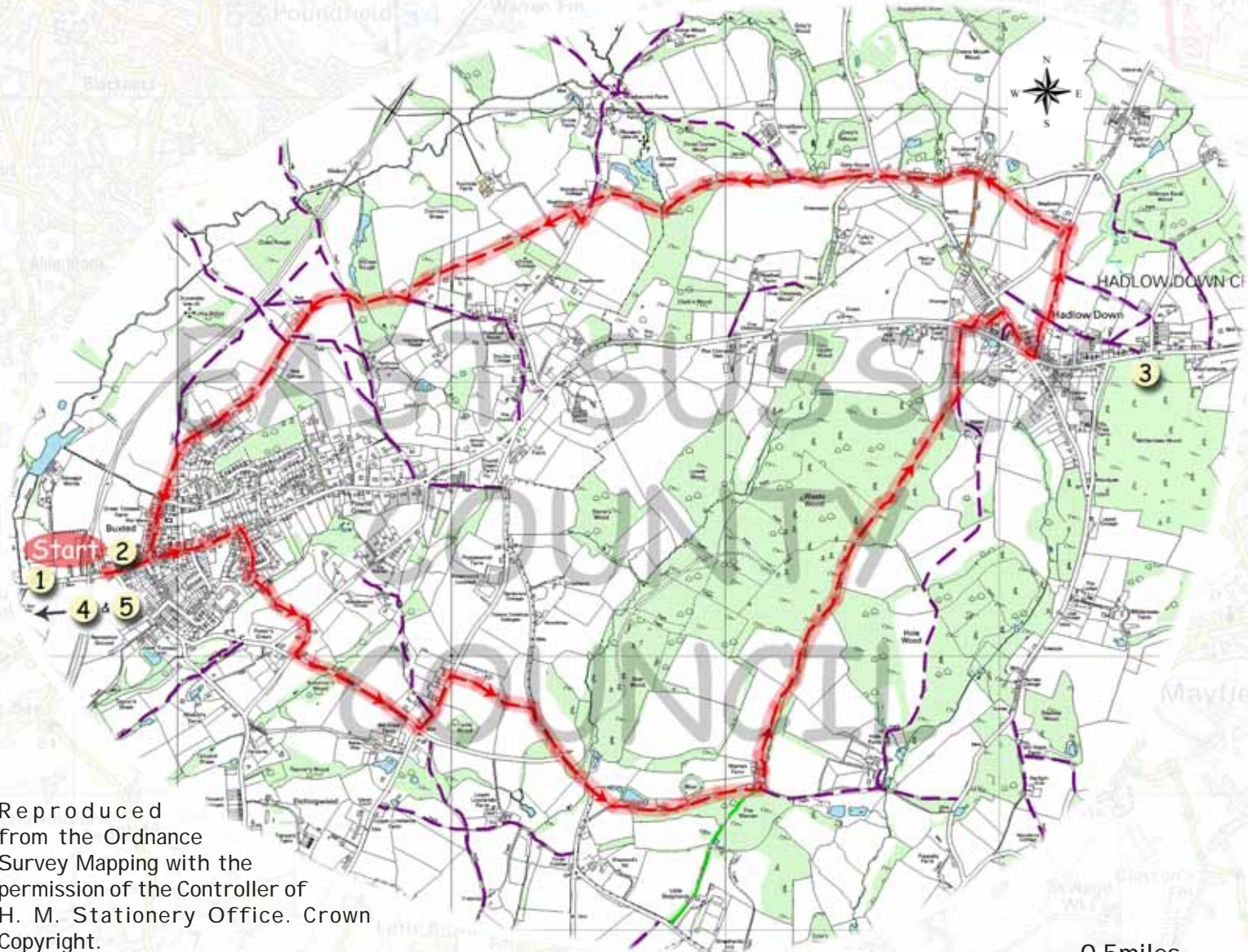
If any problems are encountered on the walk please report them to the above contact points.

Please note that inclusion of business details in this leaflet does not constitute an endorsement of the business by East Sussex County Council or its agents.

Hadlow Down Walk



Deer in the distance



Map Legend

-  Refreshments & Local Services (see over for details)
-  Route
-  Other Public Footpaths
-  Other Public Bridleways
-  Byways Open to all Traffic

Reproduced from the Ordnance Survey Mapping with the permission of the Controller of H. M. Stationery Office. Crown Copyright.

Unauthorised reproduction infringes Crown Copyright and may lead to prosecution or civil proceedings.
East Sussex County Council - 100019601, 2006.

0 0.5miles 1km



Frosty morning view

Starting from Buxted Railway Station, turn left on leaving the car park, and head up hill through Buxted village centre. On reaching the village shop, cross the road and continue in the same direction.

Shortly after passing the right hand turning to Britts Farm Road, turn right onto the signposted footpath running behind the gardens. The route crosses Britts Farm Road and continues to follow the road ahead, before bearing left beside number 16 as indicated by the footpath sign. Continue to follow the route down the steps and across the footbridge, and then up hill along the well defined path. On reaching the main field, follow the field edge path, with the hedge to your left, to reach a road junction.

Cross the lane to follow the road straight ahead for a short distance, before turning left at the next road junction. Follow Nann Tucks Lane for approximately 530 metres (580 yds.) before turning left at the next road junction, signposted to Hadlow Down. On reaching the last house on the left, turn right onto the signposted footpath and follow the field edge path, keeping the hedge to your left. Continue straight across the open section of field, heading towards a stile in the hedgeline, and then

follow the edge of the next field, with the hedge to your left, to reach a lane.

Turn right and follow the road for approximately 370 metres (400 yds.), turning left onto the signposted footpath, after crossing the stream. Follow the path straight across the middle of the field, as indicated, heading towards a stile. Follow the waymarked path beside the hedge, and then along the track through the woodland. On reaching Warren Farm, follow the waymarked route, turning left onto the bridleway. Continue to follow the well defined bridleway for a total distance of $1\frac{3}{4}$ kilometres (approximately 1 mile) to reach the main road in Hadlow Down.

Turn right and follow the road for a short distance, before turning left through the kissing gate to join the signposted footpath through the church yard. Follow the surfaced, signposted path around the church yard, through the large iron gates, and along the driveway to School Lane. Turn right and follow the road to its junction with the main A272. Turn left, and then almost immediately, turn left again to join the signposted footpath. Turn right at the end of this section of path, and then almost immediately left. Continue to follow the waymarked route ahead to reach Waghorns Lane. Cross the road and follow the signposted path opposite. The route now crosses two more fields before descending a set of steps to join Stockland Lane.

Turn left and follow the lane to the next road junction, at which point cross straight over to follow the road signposted towards Buxted, before turning right along the driveway to Smallberry Hill. Follow the driveway for approximately 260 metres (285 yds.) before turning left at the next signposted path junction. Follow the route through the woodland, heading down hill to a footbridge. Continue along the path up hill, and keeping the fence to your left, follow the route to reach a stile beside Howbourne Lane. Turn left, and after a short distance, turn right onto the path through a gate.

Follow route ahead, with the hedge to your left, and turn left over the stile, cross the field, and then the driveway to Foxhole Farm. Continue to follow the waymarked route, crossing a number of fields, before turning right on reaching a track. Follow the path down hill through the woodland, and then continue up hill to reach a lane. Continue straight along Church Lane, and then ahead, as this changes into Church Road. Follow the road, passing St. Marys Church, back towards the centres of Buxted. At the junction with the main road, side the village shop, turn right, and follow the main road back down hill towards Buxted station and the end of the walk.



View from the Walk